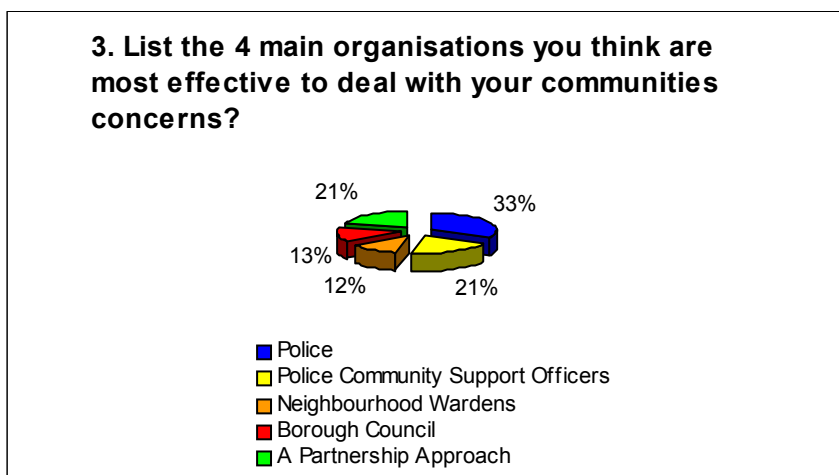
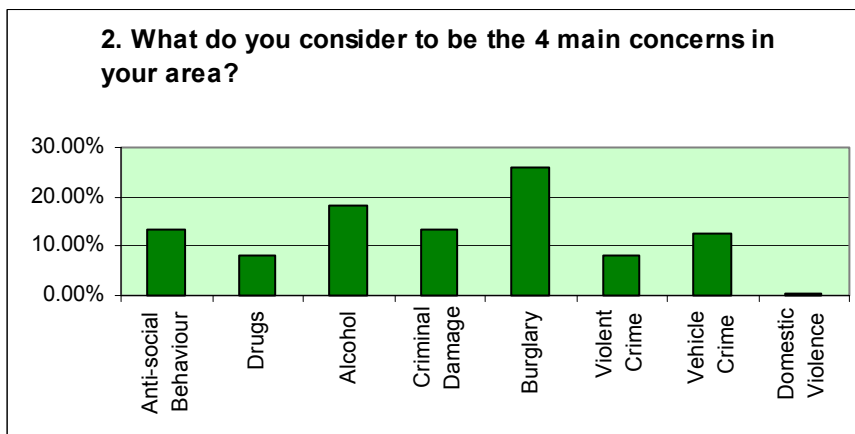
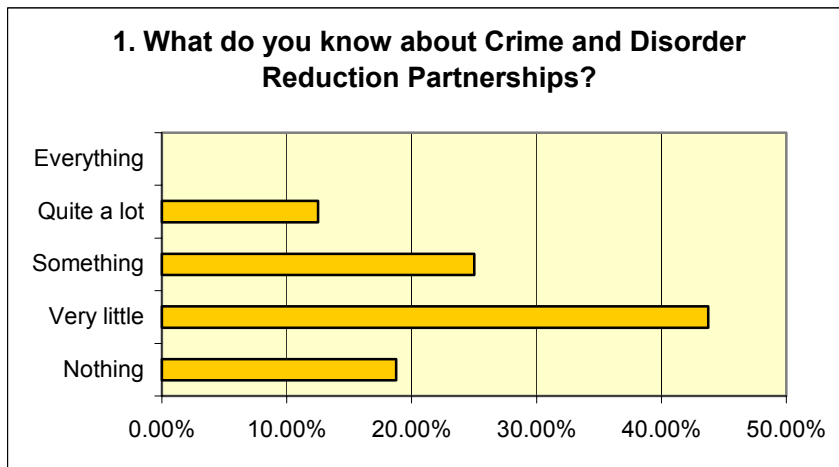
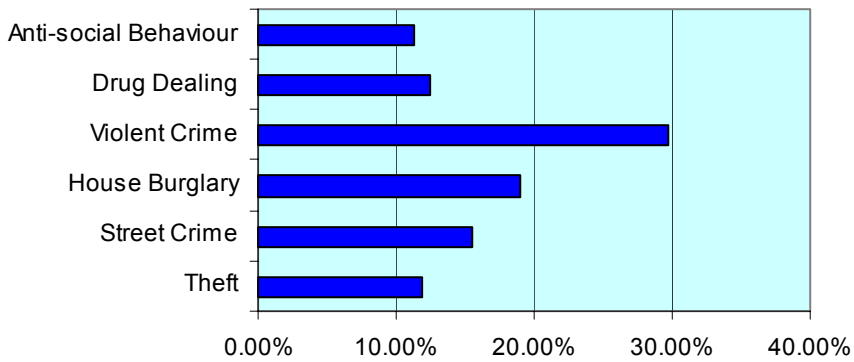


**Area Forum 2      2nd November 2004      Ferryhill Leisure Centre**

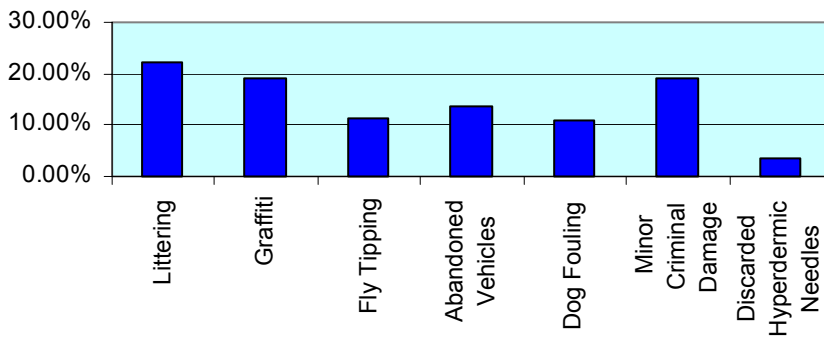
**18 Respondents**



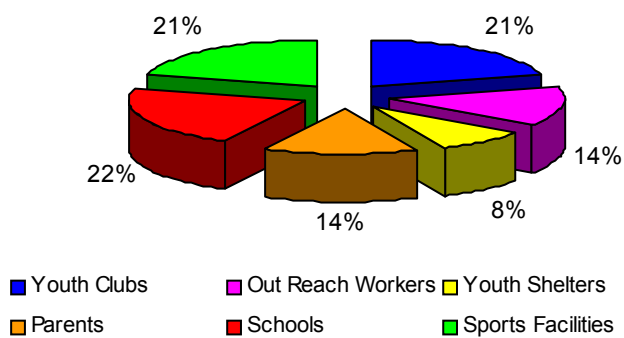
**4. What do you think are the top 4 causes that promote a fear of crime in your community?**



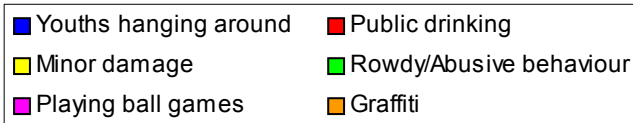
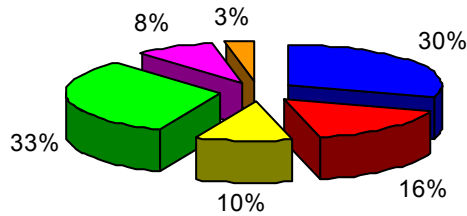
**5. Which of the following could lead to a perception of neglect in your neighbourhood?**



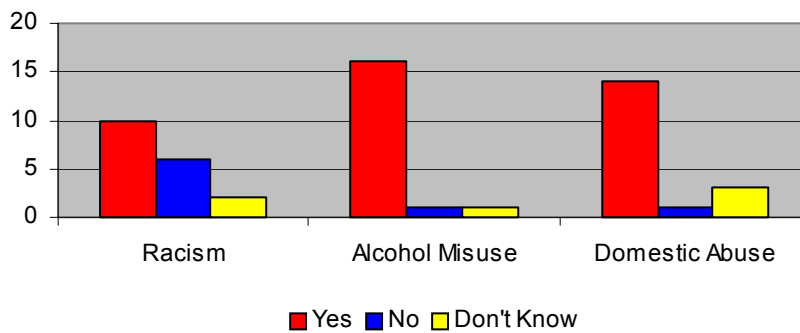
**6. What do you think are the 4 most effective ways of engaging with young people?**



**7. What are the most common types of complaint you receive from your community about Anti-Social Behaviour?**



**8. In your community do you think there is a problem with the following:**



**9. As a local forum, which do you think you are best placed to provide in order to tackle community issues?**

